



TK International
020 7794 8700
www.t-k.co.uk

Residential Sales
Residential Lettings
Property Management

Sales Office:
9 Heath Street
Hampstead
London NW3 6TP
E: sales@t-k.co.uk

Lettings Office:
16-18 Heath Street
Hampstead
London NW3 6TE
E: lettings@t-k.co.uk

tk.international
TK International
TK International



Lower Merton Rise Primrose Hill NW3

This stunning and contemporary family home has been fully refurbished to an exceptional standard, offering a modern living space across three floors.

Nestled on a private driveway, the house has parking for three cars, providing both convenience and privacy. The spacious reception room is filled with natural light, and the sleek, fully fitted eat-in kitchen opens directly onto a private patio garden. On the second and third floors, there is an impressive principal bedroom, complete with an en suite bathroom, dressing room/study, and its own private balcony. There's also a second double bedroom with a separate shower room, along with three additional double bedrooms and a third family bathroom. The property also boasts wooden floors throughout, with the added benefit of access to communal gardens.

Situated in the heart of Primrose Hill, a conservation area between Camden Town and Regent's Park, this location is known for its tree-lined streets, charming Victorian bookshops, cafes, and restaurants. It's a popular spot for the young and fashionable, including several A-List celebrities. Plus, the view from the top of Primrose Hill is one of London's six protected viewpoints, offering breathtaking sights over London Zoo and Regent's Park, which are just across from the village.

EPC Rating: D
Council Tax Band: G (Camden)

£10,000 Per Month

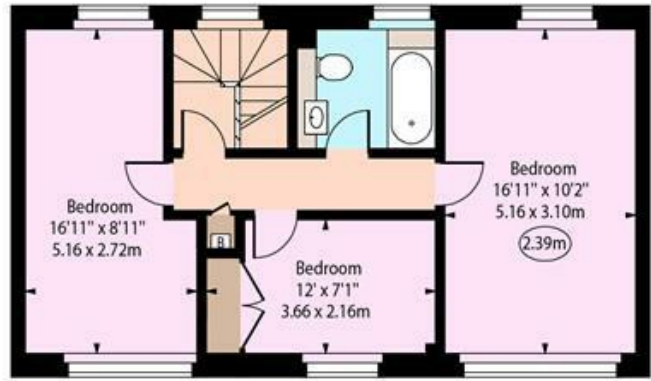
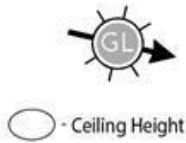
SOLE AGENT



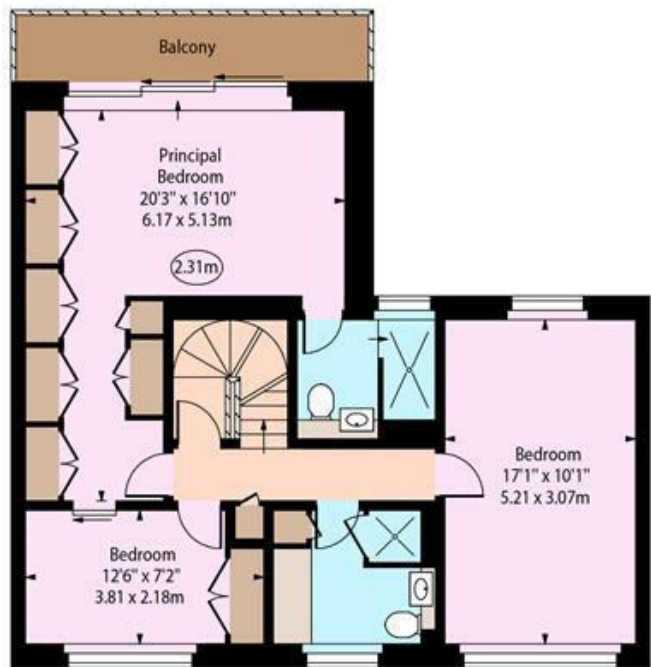




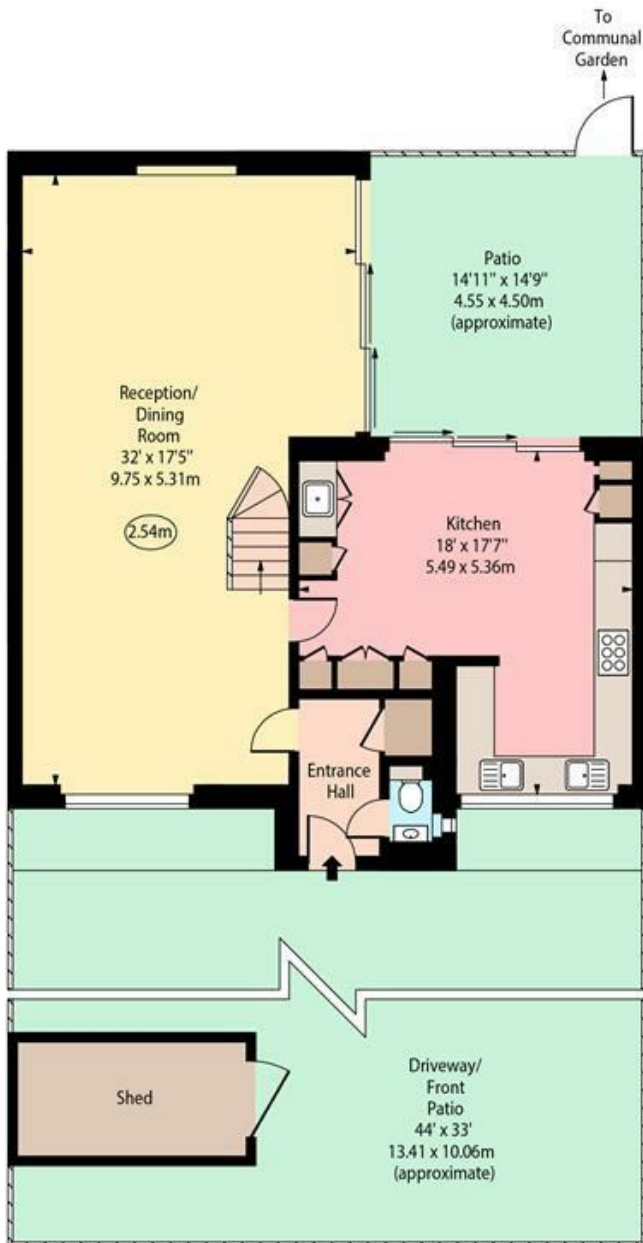
Lower Merton Rise, NW3



Second Floor



First Floor



Ground Floor

Approx Gross Internal Area 2130 Sq Ft - 197.88 Sq M
(Excluding Shed)

For Illustration Purposes Only - Not To Scale
www.goldlens.co.uk
Prepared for TK International
Ref. No. 025479K